

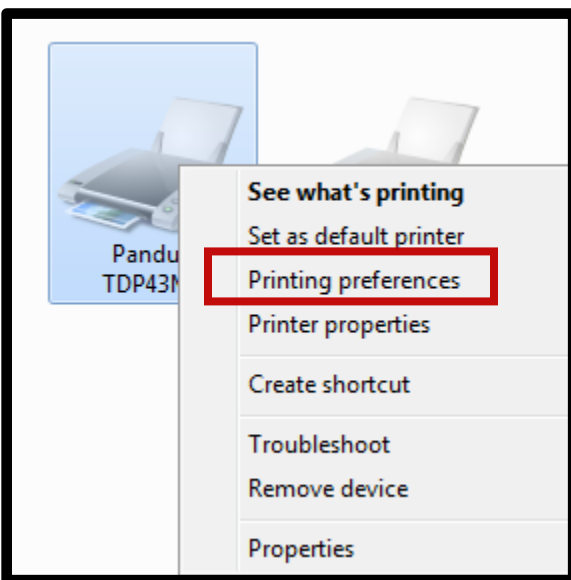
Title: TDP43ME Printer Properties (ports) for Windows 7

Purpose: To provide instruction on verifying correct port

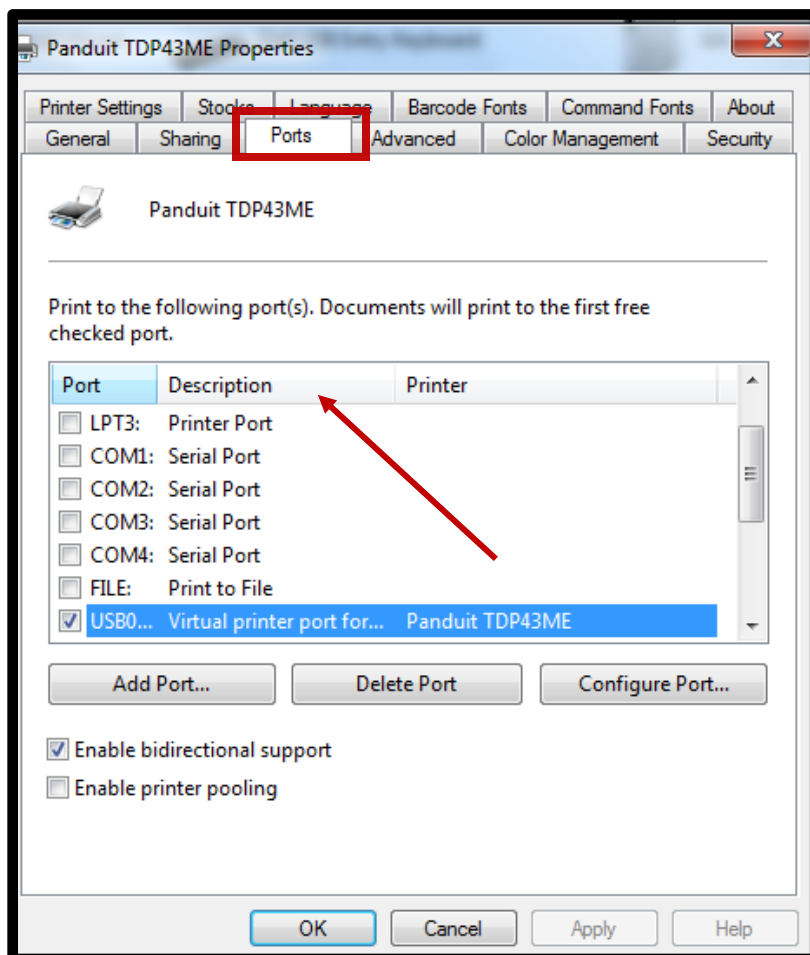
Audience: These instructions are for the users of the TDP43ME

Procedure:

1. Go to Devices and Printers.
2. Right click on the TDP43ME printer, and click on Printer Preferences

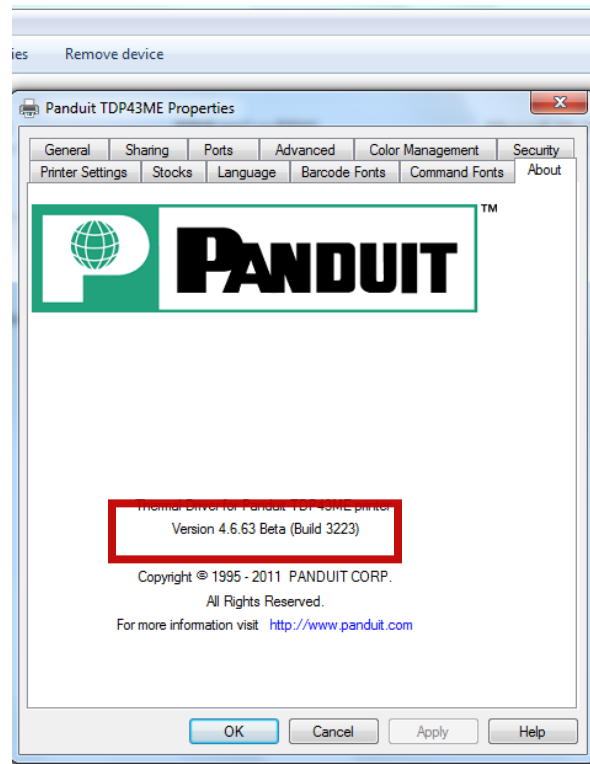


1. Click on the Ports tab at the top this screen. To see what port number your TDP43ME printer is on, the description column will need to be widened.



2. The TDP43ME uses a virtual printer port. It is not uncommon when the computer detects it, it will place it on an LPT port. Simply change the virtual printer port.

3. While in the Properties window, you can also check for the driver version to ensure the latest driver is being used. Click on the “About” tab at the top of your screen you will be able to see what printer version, you have. The latest printer version is: 5.1.03.



NOTE: be sure after a change is made to open Easy-Mark Plus and go to File/Print/Properties and make sure that change took effect. Also be sure to click “Apply” every time it is highlighted to do so.